



Upper Park, Loughton, IG10

BUTLER & STAG



**Guide Price £425,000 -
£450,000**

**Spacious and well-presented
three bedroom apartment,
located on the first floor of a
modern purpose built block
with off street parking,**



Leasehold

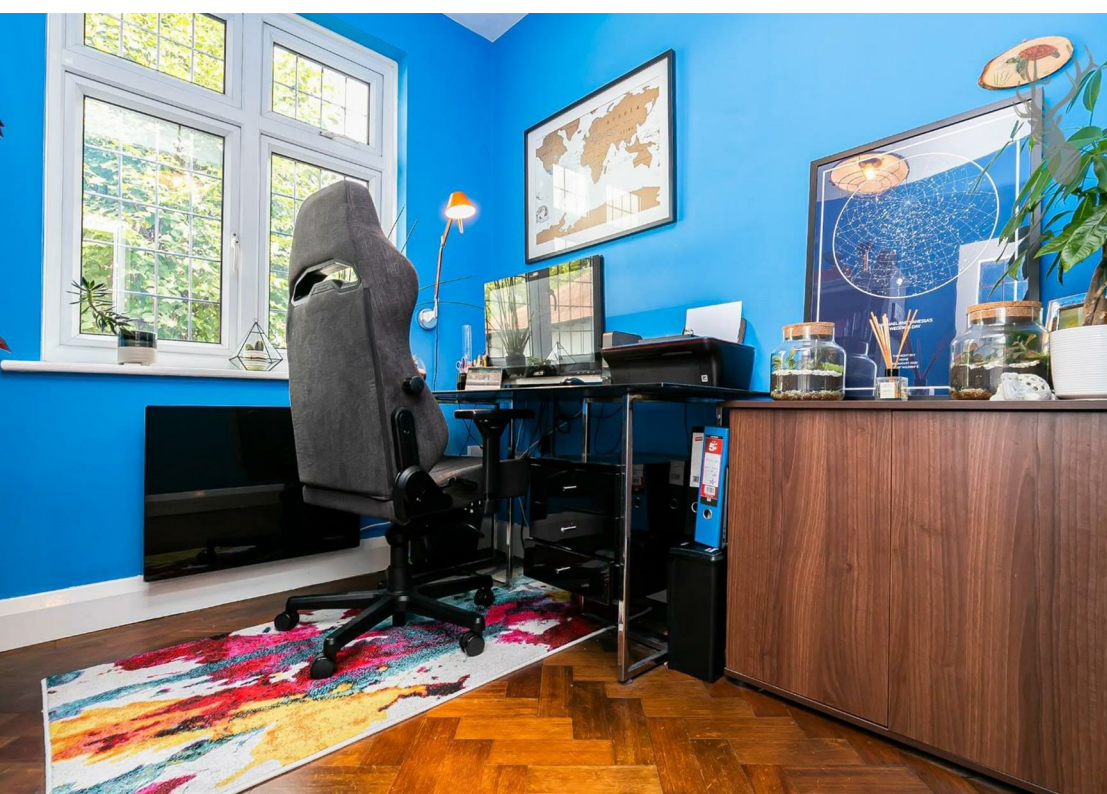
- First Floor Flat
- Three Bedrooms
- Stunning Throughout
- Sought After Location
- Permit Parking
- Long Lease

The accommodation comprises of a generous size entrance hall with original herringbone parquet flooring throughout the flat. The lounge feels particularly spacious with its high ceilings and a large bay window. The room has a wonderful character feel with its fireplace. The kitchen offers a fantastic size with space for appliances. The three bedrooms are generously sized with plenty of space for wardrobes and storage, with the third bedroom currently used as a study. The family bathroom is fitted with a white suite including a shower/bath.

Externally the property is well looked after with a beautifully maintained communal garden and outside bike shed.

There is also resident's parking with one allocated space per flat. Being situated just a short walk from Loughton High Road, its Central Line station and Epping Forest, this would make an ideal purchase for commuters, hybrid workers, or downsizers alike.





Grange Court, IG10

First Floor

Approx. 76.46 Sq. meters (823 Sq. feet)



Total area: approx. 76.46 Sq. meters (823 Sq. feet)
For illustration purposes only - not to scale
www.lpaplus.com

IMPORTANT NOTICE - These particulars have been prepared in good faith and they are not intended to constitute part of an offer or contract. We have not performed a structural survey on this property and the services, appliances and specific fittings have not been tested. All photographs, measurements, floor plans and distances referred to are given as a guide and should not be relied upon.

BUTLER & STAG

☎ 01992 667666

🏠 4 Forest Drive, Theydon Bois, Essex, CM16 7EY

✉ theydon@butlerandstag.com

www.butlerandstag.uk